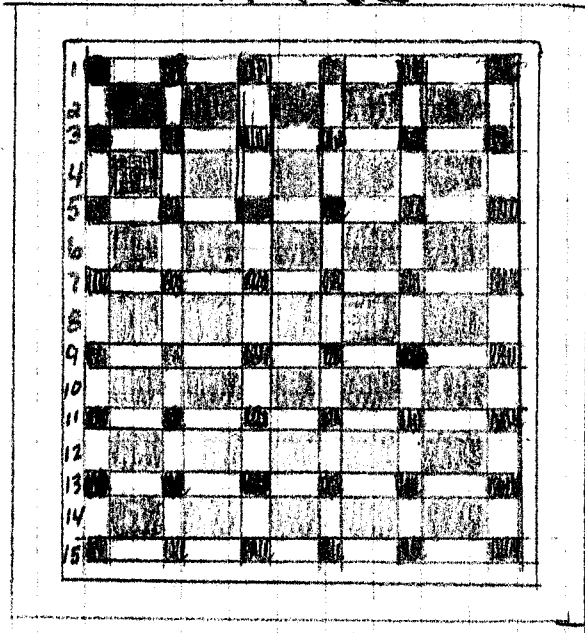


# Super Simple Square Quilt J4U

44 x 56

15 rows



- 1 Charm pack or 35 - 5" squares
- 1 1/2 yd Shashing + inner border
- 1 yd Corner stones, outer border and binding

cut:

- 35 Charm Squares (5x5)
- 11 2 1/2" wof - shashing - sub cut 22 2 1/2 x 5"
- 5 2 1/2" wof Inner Border
- 3 strips 2 1/2" wide wof for cornerstones  
subcut into 48 - 2 1/2" squares
- 5 strips - 3 1/2" wide for outer border
- 5 strips - 2 1/2" wide for binding

Sew: The 8 odd numbered rows as shown.  
The 7 even numbered rows as shown.  
Assemble rows as shown.  
Add inner border, then outer border.  
Ta-da! Top is ready.